

IFAD's Rural Resilience Programme (2RP)



Pillar III: IFAD and Green Climate Fund's Umbrella Programme for the Great Green Wall for the Sahara and the Sahel Initiative (GCF-GGW UP)

IFAD and Green Climate Fund's Umbrella Programme for the Great Green Wall for the Sahara and the Sahel Initiative (GCF-GGW UP)

Established in 2007, the Great Green Wall Initiative was and is a land restoration initiative that brings together African countries and international partners, under the leadership of the African Union (AU) and Pan-African Agency of the Great Green Wall (PAA).

Figure 1: Approximate location of the GGWI



Source: <https://www.greatgreenwall.org/results>

In recent years, the vision of the GGWI has evolved into a more comprehensive and integrated development approach with the following objectives by 2030:

- Restore 100 million hectares of degraded land
- Sequester 250 million tons of carbon
- Create 10 million jobs.

What will the GCF-GGW UP do?

The framework proposed by the GCF, IFAD, the United Nations Convention to Combat Desertification and France builds on the achievements of the older GGWI. It will **identify transformational approaches** to better support countries in implementing their national development plans and strategies that help to restore land, soil, agricultural production, green cover, access to markets and nutrition.

The GCF-GGW UP focuses on GCF projects and programmes supporting the GGWI. Its key pillars include:

Pillar 1: Investment in small and medium-sized farms and strengthening of value chains, local markets, organization of exports

Pillar 2: Land restoration and sustainable management of ecosystems

Pillar 3: Climate-resilient infrastructures and access to renewable energy

Pillar 4: Favourable economic and institutional framework for effective governance

Pillar 5: Capacity-building

How will the GCF-GGW UP work?

Each entity accredited to the GCF will be able to submit projects and programmes to the GCF, following GCF standard procedures.

It is expected that a set of common indicators and means of verification will be defined during the elaboration of this Umbrella Programme, which will take place during the first part of 2021, and will then be used by all accredited entities. This will facilitate monitoring of the implementation of each project and allow for easier consolidation of results achieved on the ground.

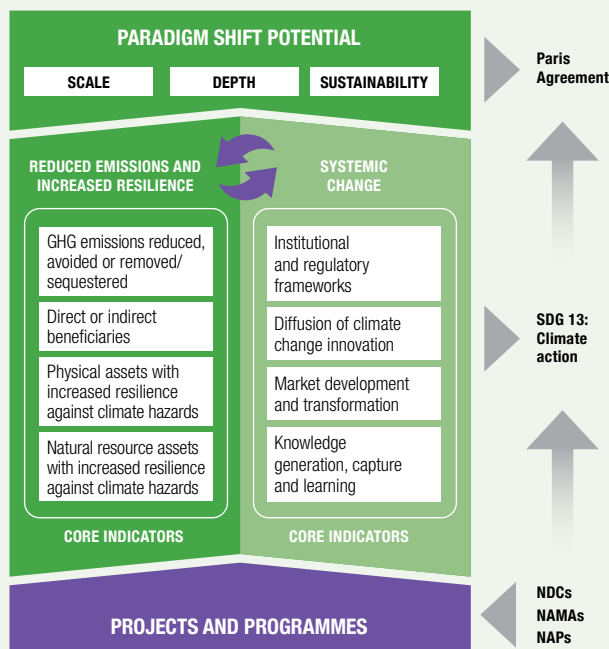
As part of this initiative, IFAD will also set up and manage a GCF-GGW support unit. This support unit will contribute to the monitoring and evaluation of the Umbrella Programme and enhance knowledge exchange between all GCF projects and programmes supporting the GGWI.

How will success be measured?

The GCF-GGW programmatic approach will facilitate two objectives:

- (i) More consistent and credible reporting of climate results of GCF-funded projects/programmes, that can be aggregated and reported, for the Great Green Wall Initiative
- (ii) An integrated assessment of the contribution of its investments to promoting a paradigm shift towards low-emissions and climate-resilient development pathways.

Figure 2: Integrated Result Management Framework architecture



GHGs: Greenhouse gases
 NAMAs: Nationally Appropriate Mitigation Actions
 NAPs: National Adaptation Plans
 NDCs: Nationally Determined Contributions
 SDG: Sustainable Development Goal
 UNFCCC: United Nations Framework Convention on Climate Change

A call for action

The challenge: The Sahel is home to over 135 million people. This total is expected to double by 2050. The impacts of climate change disproportionately affect this region because of its dependence on agriculture. In many cases, scarcity and uncertainty in resources has pushed millions of people to migrate and has led to conflicts.

A solution: Investments to restore the land, directed at communities, are clearly required. Interventions must focus on agricultural value chains that include targeting land, seeds, production, markets and nutrition. These require supportive policies, incentives for communities, effective engagement with the private sector, and continuous monitoring and learning.

The Great Green Wall Initiative (GGWI) aims to restore lands in the Sahel and create 10 million jobs by 2030. This will require an investment of at least US\$33 billion from national and international sources. Donors are encouraged to invest in and support countries in implementing GGW activities as current levels of funding are insufficient.

The Green Climate Fund (GCF) Great Green Wall Umbrella Programme focuses on climate change adaptation and mitigation in GCF projects and programmes. It will enable countries along the Great Green Wall (see Figure 1) to accelerate progress to reduce greenhouse gas emissions and adapt to the impacts of climate change.






Contacts

Pierre Yves Guedez
Senior Technical Specialist – International Climate
Trust Funds
Environment, Climate, Gender and Social Inclusion Division
E-mail: 2RP@IFAD.org

Maria Elena Mangiafico
Knowledge Management Specialist
Environment, Climate, Gender and Social Inclusion Division
E-mail: 2RP@IFAD.org



International Fund for Agricultural Development
Via Paolo di Dono, 44 - 00142 Rome, Italy
Tel: +39 06 54591 - Fax: +39 06 5043463
Email: ifad@ifad.org
www.ifad.org

 facebook.com/ifad
 instagram.com/ifadnews
 linkedin.com/company/ifad
 twitter.com/ifad
 youtube.com/user/ifadTV

